

BOHEMIA GALLERIES  
NEWSLETTER

SUMMER 2004

## INSIDE THIS ISSUE:

WELCOME	1
WHAT'S NEW ON THE ART- STIC FRONT?	2
MARK HALSEY	3
BLACK RYDEN	4
HOW IMPOR- TANT IS IT TO YOU THAT THE ARTWORK YOU?	5
DATES FOR YOUR DIARY	6

SPECIAL POINTS  
OF INTEREST:

## Frank Bentley

New Works 17th Sep-  
tember—3rd October

## Black Ryden

Open day event on the  
25<sup>th</sup> September

## What's Hot

Artiom's

Mark Halsey

John Holt

## WELCOME TO OUR THIRD NEWSLETTER

Welcome to our third Newsletter. We have several exciting announcements we are proud to make and hope that you art and ceramic lovers out there will take the opportunity to enjoy what's on offer. However before we come to that, just a quick recap of what has happened since we last wrote in January. Gallery II in Sow Hill is off to a flying start and thanks to all of you who have visited and commented on the much improved exhibition space and exhibits. To everyone else, come and see us.

Exhibitions in February and May resulted in several newly emerging favourite original artists, the show stopping works of Duncan Macgregor, for example, sold so quickly that he is now working on a number of commissions for customers.

Works brought back from our visits abroad have also caused a storm. Particularly two beautiful large original Poppy paintings by Peggy Corthouts

## Enough of the past.

As always we are busy looking for new and fresh items to tempt your artistic appetites.

Do not miss the latest red-hot sensation to come out of South America, Fabian Perez whose sizzling works are based on real life local scenes of street culture and are tantalisingly sexy.

We have been privileged to have a sneak preview of The Doug Hyde Tour, due out in September and it is fantastic. We are to receive our collec-

eagerly snapped up. Darina Marko is in demand as are the new works by Kolio Marko, her husband, following his two-year commission for the U.N. Highly sort after Russian artist, Ludmila Curilova's gorgeous spiritual female paintings simply flew out the gallery, and her 10-year-old son Artiom has proved to be a most popular new talent. Affordable, original and hopefully a great investment, demand for Artiom's work is presently outstripping supply. See website for details.

In the fine art print section Doug Hyde continues to be strong with the three works issued in Spring selling before we received them. He has recently auctioned an original painting for the NSPCC and raised a staggering £4550 We are pleased to have just restocked with his latest Summer release entitled Love Keeps Growing. Already sold out at the publishers, do not miss the chance to purchase

one of only six we have been allotted.

Paul James whose original paintings are in the £10,000 bracket, paints highly detailed and amusing pictures of animals and birds, a pair entitled Camilla and Charles featuring a cow and a goat, proved to be very popular and his geese Magnificent Seven and The Return of the Seven also, one to watch!



Sheana and the Dragonfly Vase

by Black Ryden

tion towards the end of October so please take a look in Gallery II.

We have our fabulous Originals Winter exhibition end of November and have acquired some rare and sensational work. Lined up are new works by Ludmila Curilova, Peggy Corthouts, Cyril Croucher, Stephen Brown and many more.

On the ceramic front we are especially pleased and proud to announce that we have been selected to host the first ever Black Ryden Event Day,

which will be history in the making. Please read our feature on this British Art pottery further on.



Jonathan Harris

**WHAT'S NEW ON THE ARTISTIC FRONT?  
MARK HALSEY**

Mark Halsey was born in Hull in 1961. His work is held in corporate and private collections in Britain and overseas. Mark's paintings range from large canvases to small works on paper in oils and mixed media. Always referring to the human form, the paintings reach beyond the boundaries of literal art. Spontaneous splashes of paint and earthy hues throw celestial light across a fusion of the figure and landscape. A strong use of light and colour is used to en-

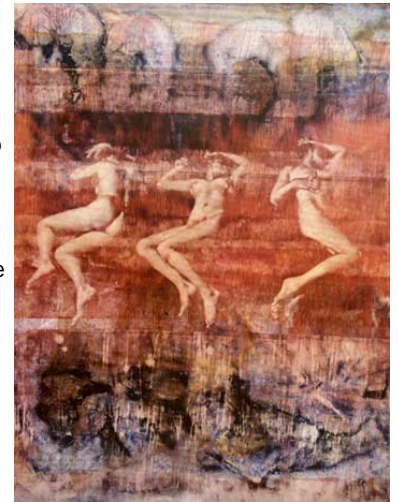
hance a powerful physical presence. It is the mood of the painting and the emotions aroused that are of paramount importance.

Bo-ho advises a number of corporate clients on their collections, a service which requires us to constantly seek out new and emerging artistic talent.

If investment is an important part of your decision, we can help at a number of levels. From newly graduated talent showing huge promise through to well established,

well collected artists, we can help you to develop a strong and appropriate collection for your needs, Mark Halsey fits this criteria and we believe Mark to be one of the regions best living painters today.

It is impossible for us to guarantee increases in the value of the art that you buy, however, as an indicator of potential, clients over the past 12 months have experienced gains of up to 100% with purchases made from Bohemia Galleries



**BIRTH OF A NEW BRITISH ART POTTERY.**

Black Ryden is the name of a field off Ryden Lane near the village of Charlton, near Evesham, Worcestershire. With panoramic views over fruit orchards and com fields to Bredon Hill just over 1,000 feet high on the southern boundary of the Vale of Evesham, Black Ryden has carried its name for centuries. Today this is a wild, lonely place but beautiful beyond recognition in a modern world. Flowers in the hedgerows: Ryden Lane close by with its banks covered in sweet-scented cow parsley:

May trees in flower talk together and greet those who care to pay Black Ryden a visit. From this strange, mystic field, come ceramic shards dating back to the Bronze Age. Today it provides inspiration for design images derived from nature itself. Black Ryden shapes, with their origins in Holland, with colours from four different countries and designs from five of the most innovative young designers working with ceramics today, all come together to make Black Ryden a new and unique experience

The shapes arc, curve and sweep in lines that would do credit to the art nouveau era, and yet in essence they are both young and incredibly beautiful.

Using rare oxide colours, some hand-mixed to ensure the right effect, the designs are often deceptively simple, command direct focus, and yet are alive with washes of colour applied by hand.

**Black  
Ryden  
Open Day  
Event  
starting on  
25th Sep**

**BLACK RYDEN**

Black Ryden is hand-crafted pottery made in England from start to finish. Each piece has been turned on the potter's lathe to perfect its shape. Design lines are applied to the surface of the vase using a sharp, pointed tool. By incising a small groove, the sgraffito artists create fine, narrow 'ditches' on the clay surface, which hold in place, the colours applied later with a fine brush.

After a first firing, the vase is dipped in a glaze and then fired for a second time. The result is a work of art designed to give pleasure in any house graced with its presence.

Black Ryden is part of the world famous Moorcroft PLC group and is only into its second year of production. Utilising the skills of Moorcroft's 100 years of existence it is incredibly exciting to be there at the

birth of a new British art pottery. Bohemia Galleries is very proud to be hosting the first ever Black Ryden open day event on the 25<sup>th</sup> September where we will have Emma Bossons, one of Moorcroft's top designers, in the gallery from 12 - 3 to talk to and to watch as she shows us how she executes her designs.



The Black Ryden Fairy Ring Vase  
Only £150

HOW IMPORTANT IS IT TO YOU THAT THE ARTWORK YOU?

**Black Ryden. Cont**

To commemorate the day a new creation will be on sale titled The Fairy Ring vase. This can only be purchased or ordered before or on that day and Emma will be happy to sign each piece. We hope you will join us on this very special occasion.



**How important is it to you that the artwork you choose fits with your environment?**

Like it or not, the art we choose for our own home, will say quite a bit about us as well. In a home space, some people like to surround themselves with art that means something to them. Others may wish to make a statement to shock, relax or energise a room. It can be a focus or it can be used to compliment. – it is certainly one of key



ways in which we can truly personalise a space and make it our own – after all original artwork is exactly that – original – a one-off – owned only by you – and a way in which just like the clothes we wear – it is a way in which we can express ourselves.

I also find that art forms an effective counterbalance against the amount of technology that we are surrounding ourselves with, often helping to soften the lines in a room and helping to create real points of interest and personal expression.

Whereas, in the dining area – you may want pieces that are livelier – perhaps provoking conversation when entertaining.

The bedroom we will leave to your own imagination. But I would personally recommend Mark Halsey for creating just the right mood.

**What are people buying?**

As we see increasing numbers of people buying

At Bo-ho, we are finding people in droves seeking to move away from the Habitat and Ikea print and instead, seeking to furnish their home with something original, special to them.

**Where to start?**

When buying to let for example, I think it is important to recognise this and to use artwork that is likely to fit with the aspirations of your target tenant, and naturally artwork which is of an appropriate standard to fit with the way in which

into the concept of city living and the whole open plan, clean, contemporary way of decorating interiors,

As you would expect, we are seeing increasing moves away from the more traditional landscapes, oil paintings – through to contemporary, modern pieces of work.

Original work is certainly more sought after. Seeing a real boom in abstract work, cityscapes are also very popular.

the apartment has been furnished.

We always recommend clients to consider how they will spend their time in particular spaces in the home. Some pieces are more liveable on a day to day basis than others. For example, in the lounge where we usually spend most of our time – it often makes sense to use pieces that we will enjoy looking at for long periods – perhaps they are slightly quieter or gentler pieces.

**Commissioning?**

Any size, any colour, diptychs or triptychs. Still giving the artist the freedom to express themselves, however, also giving them the challenge of creating something that is sympathetic to the space in which it will be shown.

Also seeing a lot of new materials being used – metal, glass, even sand!

**Dates for your diary:**

17<sup>th</sup> September for two weeks. Frank Bentley Exhibition.

25<sup>th</sup> September. Black Ryden Fairy Ring Vase first ever Event Day with Emma Bossons 12-3 painting and taking questions.

21<sup>st</sup>-24<sup>th</sup> October. Bohemia-Galleries at The Manchester Art Show. Gallery II hosting The Doug Hyde Tour.

27<sup>th</sup> November – end January Winter Exhibition New Original Art

**BOHEMIA GALLERIES**

31 Highgate  
Beverley  
HU17 0DN

2 Sow-Hill Road  
Beverley  
HU17 8BG

Phone: 01482-881882